

CZ56:f1Tg/+(AB)

Nature of the transgene

The *f1Tg* allele was generated by random integration of pT2(myI7:GFP) construct.

Genotyping assay

1. Genotyping of the *f1Tg* allele is based on the fluorescent microscope. As identified by fluorescent microscope, the GFP fluorescence signal is detectable in cardiac muscle cell plasma membrane.

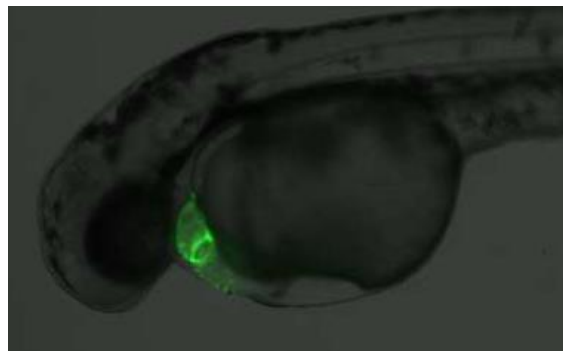


Figure. GFP expression in cardiac muscle cell plasma membrane at 2 dpf in *f1Tg* line.