

***Slc12a10.2^{ihb342/+}* (AB) (CZRC catalog ID: CZ1244)**

Nature of mutation

ihb342 allele was a mutant line, induced by the CRISPR-cas9 in the AB genetic background. An 11 base pair (bp) deletion in the first exon of *slc12a10.2* (detailed information: <http://zfin.org/ZDB-ALT-190423-6>)

Genotyping assay

Primers:

ihb342_forward: 5' GAGACTGAAAAGCTTGACGATG 3'

ihb342_reverse: 5' CGTGTCTTTGGCGTAAAAGTC 3'

PCR program:

94°C	4min	
94°C	30 sec	} 30 Cycles
55°C	30 sec	
72°C	30 sec	
72°C	5min	
4°C	hold	

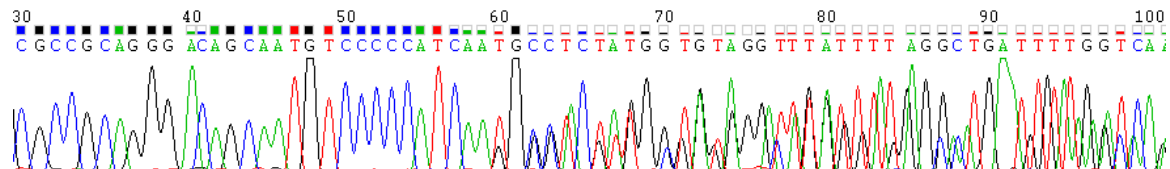
Product size: 211 bp

The sequencing results of the parents:

CZ1244 (+/-)

TGTCCCCATCAAGGGGACGTGGCTGTGGATATGGGAGAGGCT wild type

TGTCCCCATCAATGCCTCT-----ATGGGAGAGGCT



reference

Shu T, Shu Y, Gao Y, Jin X, He J, Zhai G and Yin Z (2018) Depletion of Tissue-Specific Ion Transporters Causes Differential Expression of PRL Targets in Response to Increased Levels of Endogenous PRL. *Front. Endocrinol.* 9:683. doi: 10.3389/fendo.2018.00683