

kcnj2a^{ihb500/+} (CZRC catalog ID: CZ1288)

Nature of the mutation

Between 226 bp to 227 bp of the wild-type *kcnj2a* coding sequence, TG was deleted in exon 1.

Sense Strand Sequence

GAAACAGCACAGAACTCCCA GACTGAGGTGATGGGAAGTGTGCGGGCCAACCGC
TACAGCATTGTGTCATCAGAGGAGGACGGTATGAAGTTGGCCACTGCTGCGGTGC
CAAATGGGTACGGTAACGGGAAGAGCAAAGTGCACACCCGTCACCAAACCCAAA
GCAGGTTTCGTCAAGAAAGACGGACACTGCAACGTGCAGTTCATCAATGTCAGCGA
AAAGAGCCAGCGCTACCTGGCTGACATCTTCACCACATGCGTGGACATCCGCTGG
CGATGGATGTTTCGTTATCTTTTGCTTGGCCTTCCTGCTGTCGTGGCTGTTTTTTGGAT
GTATCTTCTGGTTGGTTGCCATATTCCATGGAGACCTGGAGAACAATGGTCAAA

Uppercase: Exon/coding sequence

Lowercase: intron/noncoding sequence

atcg: Forward/Reverse primer

atcg: Crispr/cas9 target site

AAGAGCCAGCGCTACCTGGCTGACATCTTCACCACA

Genotyping assay

Primers:

CZ1288_forward: 5' GAAACAGCACAGAACTCCCA 3'

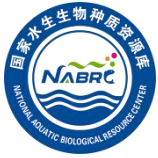
CZ1288_reverse: 5' GAAACAGCACAGAACTCCCA 3'

PCR program:

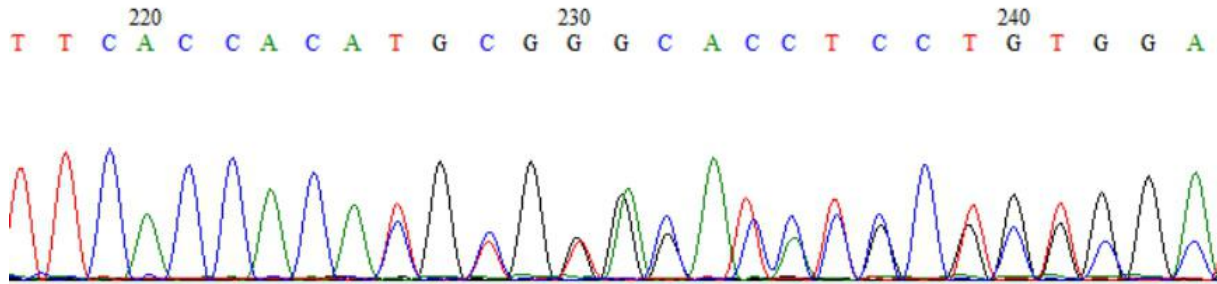
95°C	5min	
95°C	30 sec	} 30 Cycles
58°C	30 sec	
72°C	30 sec	
72°C	8min	
4°C	hold	

Product size: 386 bp





The sequencing results of the CZ1288:



```

WT          G A C G G A C A C T G C A A C G T G C A G T T C A T C A A T G T C A G C G A A A A G A G C C A G C G C T A C C T G G C T
CZ 1288     G A C G G A C A C T G C A A C G T G C A G T T C A T C A A T G T C A G C G A A A A G A G C C A G C G C T A C C T G G C T
*****

WT          G A C A T C T T C A C C A C A T G C G T G G A C A T C C G C T G G C G A T G G A T G T C G T T A T C T T T T G C T T G
CZ 1288     G A C A T C T T C A C C A C A — C G T G G A C A T C C G C T G G C G A T G G A T G T C G T T A T C T T T T G C T T G
*****

WT          G C C T T C C T G C T G T G T G G C T G T T T T T T G G A T G T A T C T T C T G G T T G G T T G C C A T A T T C C A T
CZ 1288     G C C T T C C T G C T G T G T G G C T G T T T T T T G G A T G T A T C T T C T G G T T G G T T G C C A T A T T C C A T
*****

WT          G G A G A C C T G G A G A A C A A T G G T C A C A A
CZ 1288     G G A G A C C T G G A G A A C A A T G G T C A C A A
*****

```

Reference:

None

