



***sqet20Et*/(+)(AB) (CZRC catalog ID: CZ1378)**

Nature of the transgene

The *sqet20Et* allele was generated by integration of an enhancer trap construct carries the EGFP reporter gene controlled by a partial epithelial promoter from the *keratin8* gene. This line express GFP in the, mantle cell and lateral line of the neuromast.

Genotyping assay

Genotyping of the *sqet20Et* allele is based on the fluorescent microscope. As identified by fluorescent microscope, the GFP fluorescence signal is detectable at 72 hpf.

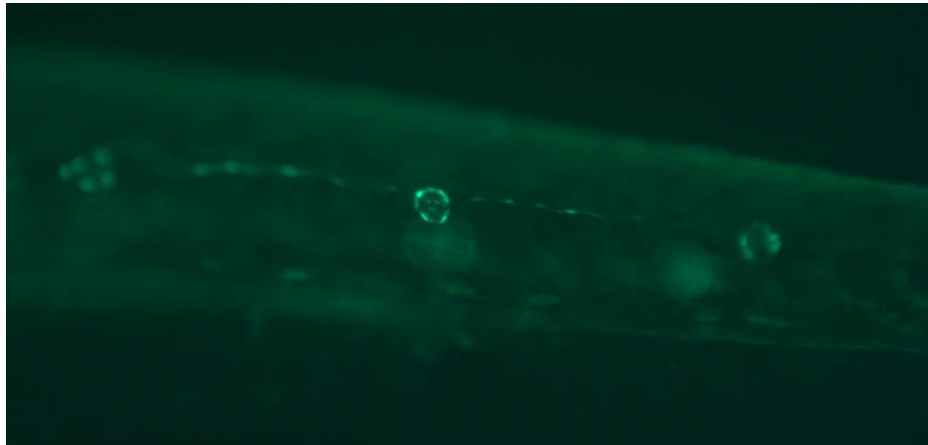


Figure. GFP expression in the lateral line at 5dpf in *sqet20Et* line.

The figure shows the lateral view of *sqet20Et* embryos at 5dpf.

Reference

Parinov, S., Kondrichin, I., Korzh, V., and Emelyanov, A. (2004) Tol2 transposon-mediated enhancer trap to identify developmentally regulated zebrafish genes in vivo. *Developmental dynamics* : an official publication of the American Association of Anatomists. 231(2):449-459

