



## ***Tg(atoh7:Gal4);Tg(UAS:mcherry) (AB)(CZRC Catalog ID: CZ77)***

### **Nature of the transgene**

The *Tg(atoh7:Gal4;UAS:mcherry)* was generated by a cross between *Tg(atoh7:Gal4)* and *Tg(UAS:mcherry)*.

### **Genotyping assay**

1. Genotyping of the *Tg(atoh7:Gal4;UAS:mcherry)* is based on the fluorescent microscope. As identified by fluorescent microscope, *mcherry* fluorescence signal is detectable in retinal ganglion cells.

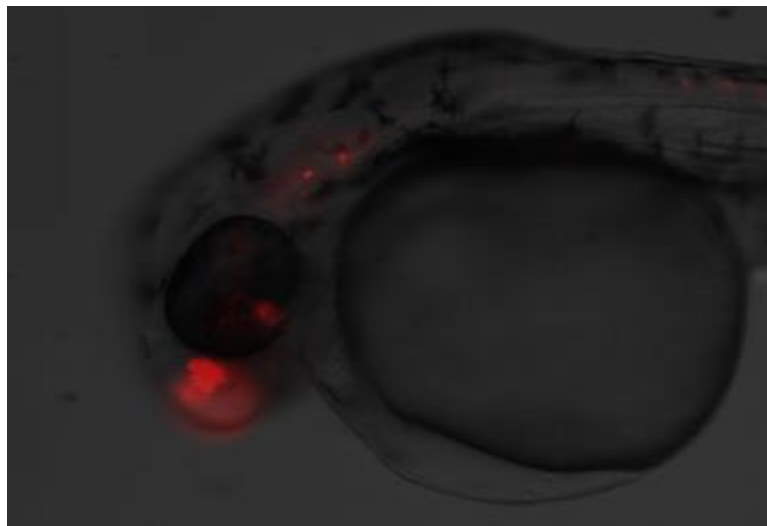


Figure. mCherry expression in retinal ganglion cells at 2dpf in *Tg(atoh7:Gal4;UAS:mcherry)* line.

### **Reference:**

Jusuf PR, Albadri S, Paolini A, Currie PD, Argenton F, Higashijima S, Harris WA, Poggi L: **Biasing amacrine subtypes in the Atoh7 lineage through expression of Barhl2.** *J Neurosci* 2012, **32**(40):13929-13944.

