



***ihb715Tg/+* (AB) (CZRC Catalog ID: CZ 1839)**

Nature of the line

The *ihb715Tg* allele is a transgenic line and the transgenic construct contains a mCherry expression cassette regulated by inducible Gal4/UAS system which driven by macrophage expressed 1 promoter *mpeg1*.

Genotyping assay

Genotyping of the *ihb715Tg* allele is based on the fluorescent microscope. As identified by fluorescent microscope, the mCherry fluorescence signal is detectable in macrophage-specific cells.

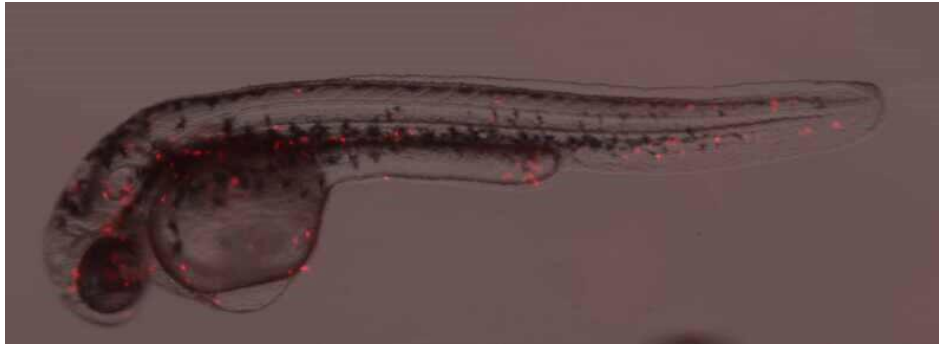


Figure. mCherry expression in macrophage cells at 2dpf in *ihb715Tg* line.

Reference:

Ellett F, Pase L, Hayman JW, Andrianopoulos A, Lieschke GJ: *mpeg1* promoter transgenes direct macrophage-lineage expression in zebrafish. *Blood* 2011, 117(4):e49-56.

